



Service Bulletin

Bulletin No. 2009-70R1
CMD 2009-10R1

Circulate to: ☐ Sales Manager ☐ Accounting ☒ Service Manager ☒ Technician ☒ Parts Manager

Replacing an Existing HH or IH Pod Drive with a Zeus 3000 Series Pod (JH) Drive

Models Affected

Models Covered	Serial Number
Zeus pod drives with model numbers ending in HH or IH	All

Situation

CMD Zeus pod drives with model numbers ending in HH or IH are no longer in production.

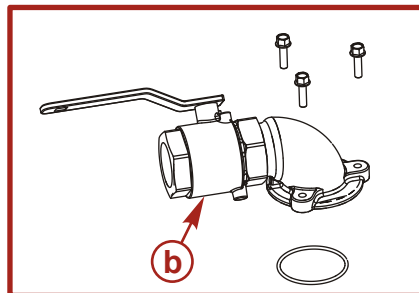
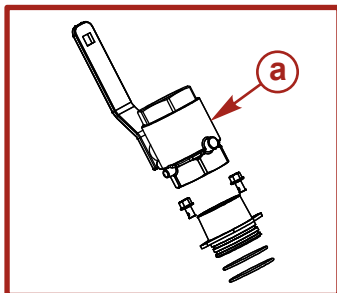
Correction

When replacement of a single Zeus HH or IH model pod drive is necessary, a Zeus 3000 Series (JH) pod can be installed with the remaining HH or IH pod. Refer to the **Zeus Model Service Replacement Table** table beginning on page 3.

When installing a Zeus 3000 Series (JH) pod alongside an HH or IH pod, consider the following information:

- The seacock on the 3000 Series pod drive is not interchangeable with earlier HH and IH model seacocks. The new seacock will need to be ordered separately from Mercury Marine and must be installed after the drive is in the boat and the clamp ring is installed. The new seacock mounts to either the port or starboard side of the drive. The part numbers for the seacocks are:

Description	Part Number
51 mm (2 in.) seacock	879150A63
64 mm (2-1/2 in.) seacock	879150A64



a - Seacock—HH and IH
b - Seacock—3000 Series

42703

- The drive cover (shroud) from an IH model will fit on a 3000 Series pod drive model, except those models equipped with a cold water cooler. The IH cover blocks some of the service access points on the 3000 Series pod drive. Changing the cover to a new 3000 Series cover will provide proper service access and will fit models with a cold water cooler. The new covers can be ordered from Mercury Marine.

THE INFORMATION IN THIS DOCUMENT IS CONFIDENTIAL AND PROTECTED BY COPYRIGHT AND IS THE PROPERTY OF MERCURY MARINE.

This document is provided for the sole and exclusive use of the original recipient as prescribed by Mercury Marine and may not be distributed or copied, digitally or otherwise, without the prior written consent of Mercury Marine.

Replacing an Existing HH or IH Pod Drive with a Zeus 3000 Series Pod (JH) Drive

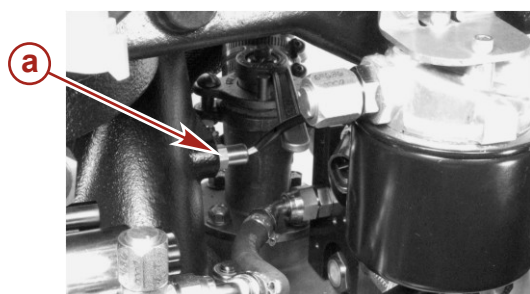
Description	Part Number
Zeus 3000 Series pod drive cover kit	879150A70



42699

3000 Series Pod drive cover changes

- The exhaust temperature sensor is not mounted on the 3000 Series pod drive. The exhaust temperature sensor on the HH and IH pod has been relocated to the engine exhaust. Contact CMD Customer Service if the exhaust temperature sensor is mounted on the steering actuator of an existing pod.



Exhaust temperature sensor relocation

- a** - Drive mounted—HH and IH
- b** - Engine mounted—3000 Series pod

42700

- Vessels originally equipped with HH or IH model drives require an upgraded software package to support Zeus 3000 Series pod drives. The required software is available from the Cummins MerCruiser Diesel download center at www.cmdmarine.com. Contact **CMD Marine Repair Logistics** for additional information:

Region	Phone Number
USA	1 866 549 6458
Outside the USA	+1 843 329 5735

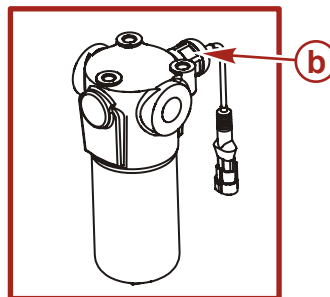
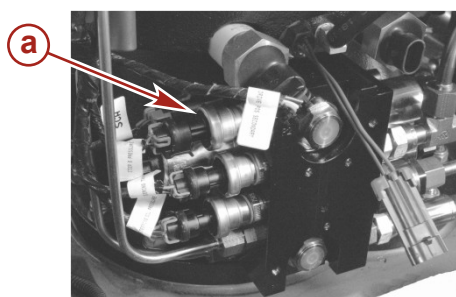
NOTE: After new software calibrations are downloaded and installed the backup pump on early models will remain operable. The 3000 Series Pod drive is not equipped with a backup pump.

- The procedure for installing the pod clamp ring has changed. Perfect Seal is required for the installation of the clamp rings and the clamp ring screws instead of Special Lubricant 101. An instruction sheet noting proper use of the Perfect Seal is included with the new clamp ring kit.

THE INFORMATION IN THIS DOCUMENT IS CONFIDENTIAL AND PROTECTED BY COPYRIGHT AND IS THE PROPERTY OF MERCURY MARINE.

This document is provided for the sole and exclusive use of the original recipient as prescribed by Mercury Marine and may not be distributed or copied, digitally or otherwise, without the prior written consent of Mercury Marine.

- The tank pressure sensor was removed on the 3000 Series pod drive because the return oil low-pressure filter system was replaced with a high-pressure filter system. The high-pressure system uses a pressure differential switch to generate a "filter clogged" fault if the filter clogs. In the absence of a pressure differential switch on the HH and IH drive, the TVM will check the tank pressure circuit instead and VesselView will not generate the "filter clogged" fault.

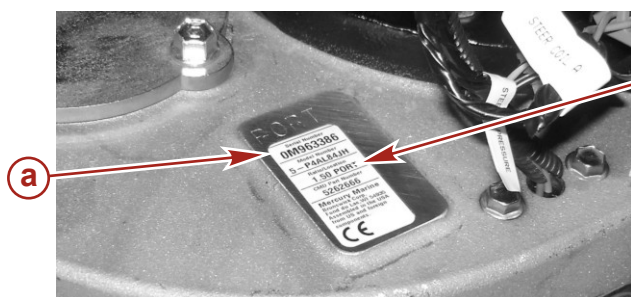


Oil system pressure sensor relocation

- a** - Tank pressure sensor—HH and IH
- b** - Pressure differential switch—3000 Series Pod (JH)

42701

- The gear ratio printed on the 3000 Series pod drive identification decal is rounded off to the second decimal place; for example, 2.06, 1.79, 1.95. On the HH and IH model decal, the gear ratio was rounded to the first decimal place; for example, 2.1. The actual gear ratio has not changed.



Identification decal on the 3000 Series pod drive

- a** - Decal
- b** - Gear ratio

42702

Zeus Model Service Replacement Table

Mercury P/N (HH End Models)	Mercury P/N (IH End Models)	Replaced by Mercury P/N (JH End Models)	Overall Ratio (All End Models)
5P4AZ54HH	5P4AZ54IH 355–480 HP (12V)	5P4AZ54JH	2.06
	5P4AZ55IH 355–480 HP (24V)		
5Q4AZ54HH	5Q4AZ54IH 355–480 HP (12V)	5Q4AZ54JH	2.06
	5Q4AZ55IH 355–480 HP (24V)		
5Q4AZ04HH	5P4AZ04IH 355–480 HP (12V)	5P4CZ64JH w/drop box cooler	2.06
	5P4AZ05IH 355–480 HP (24V)		
5Q4AZ04HH	5Q4AZ04IH 355–480 HP (12V)	5Q4CZ64JH w/drop box cooler	2.06
	5Q4AZ05IH 355–480 HP (24V)		

THE INFORMATION IN THIS DOCUMENT IS CONFIDENTIAL AND PROTECTED BY COPYRIGHT AND IS THE PROPERTY OF MERCURY MARINE.

This document is provided for the sole and exclusive use of the original recipient as prescribed by Mercury Marine and may not be distributed or copied, digitally or otherwise, without the prior written consent of Mercury Marine.

Replacing an Existing HH or IH Pod Drive with a Zeus 3000 Series Pod (JH) Drive

Mercury P/N (HH End Models)	Mercury P/N (IH End Models)	Replaced by Mercury P/N (JH End Models)	Overall Ratio (All End Models)
5P4AB04HH	5P4AB04IH 600 HP (12V)	5P4DB74JH w/cold water cooler	1.79
	5P4AB05IH 600 HP (24V)		
5Q4AB04HH	5Q4AB04IH 600 HP (12V)	5Q4DB74JH w/cold water cooler	1.79
	5Q4AB05IH 600 HP (24v)		
—	5P4AB06IH 550 HP (12V)	5P4DB76JH w/cold water cooler	1.79
	5Q4AB06IH 550 HP (24v)	5Q4DB76JH w/cold water cooler	

THE INFORMATION IN THIS DOCUMENT IS CONFIDENTIAL AND PROTECTED BY COPYRIGHT AND IS THE PROPERTY OF MERCURY MARINE.

This document is provided for the sole and exclusive use of the original recipient as prescribed by Mercury Marine and may not be distributed or copied, digitally or otherwise, without the prior written consent of Mercury Marine.